



MID-SECTION

Section 5A – Clamp/Swivel Brackets & Driveshaft Housing

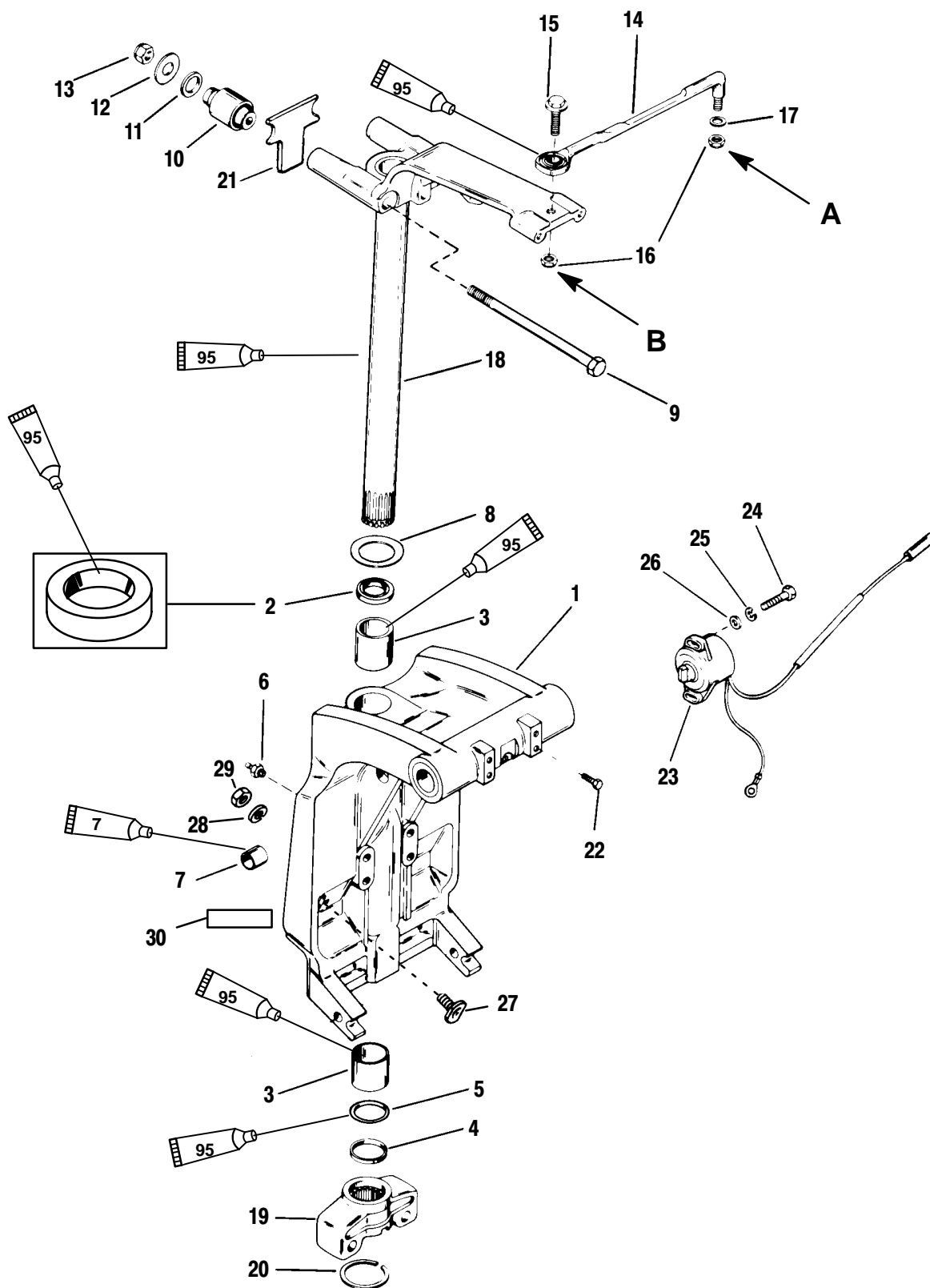
Table of Contents

Swivel Bracket and Steering Arm	5A-2	Drive Shaft Housing and Dyna-Float	
Transom Brackets	5A-4	Suspension	5A-8
Drive Shaft Housing and Exhaust Tube	5A-6	Removal and Disassembly	5A-8
		Reassembly and Installation	5A-11





2000Swivel Bracket and Steering Arm



 Loctite 271 (92-809820)

 2-4-C w/Teflon (92-825407A12)



Swivel Bracket and Steering Arm

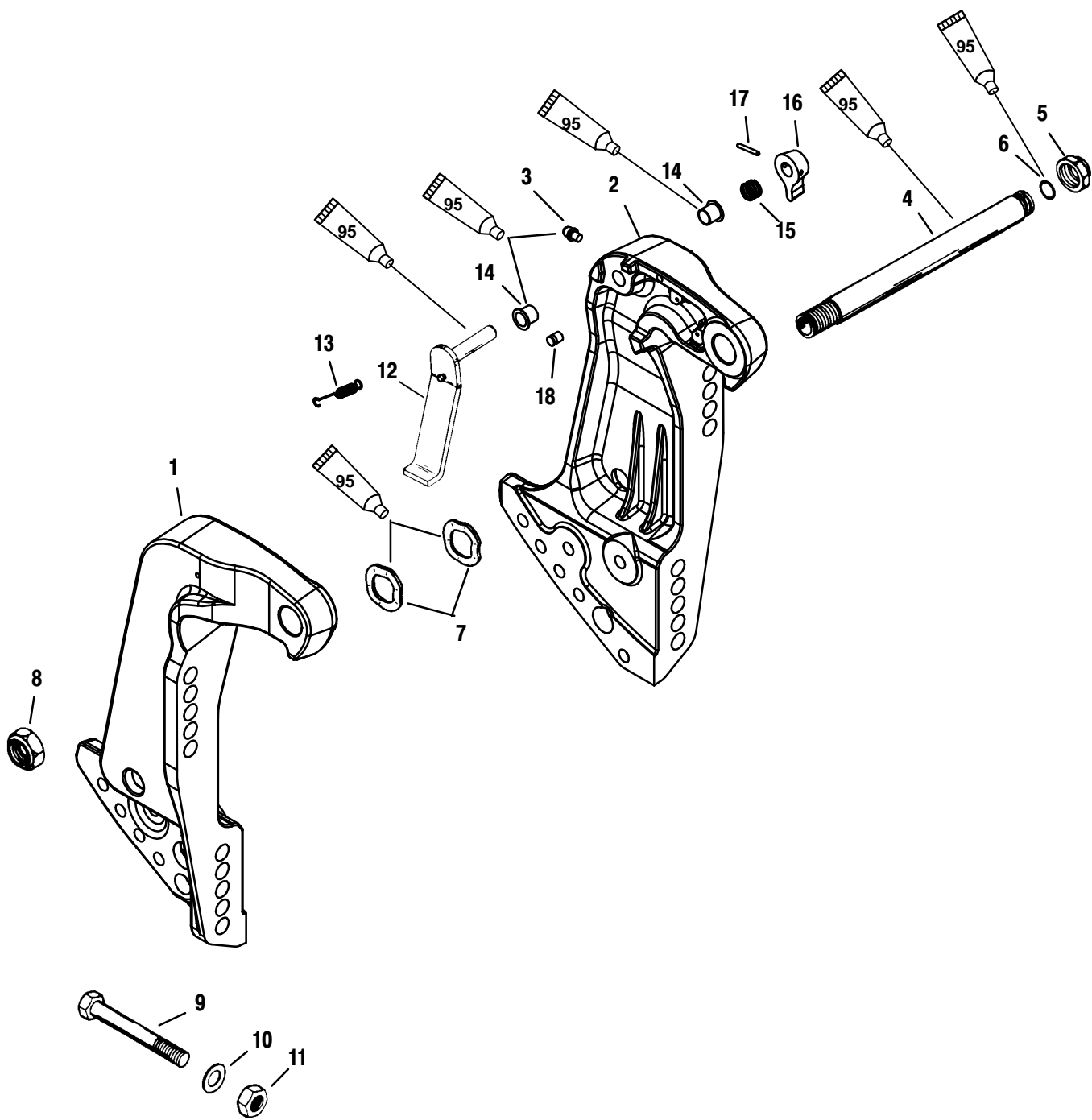
REF. NO.	QTY.	DESCRIPTION	TORQUE		
			lb-in	lb-ft	Nm.
1	1	SWIVEL BRACKET ASSEMBLY (BLACK)			
2	1	OIL SEAL (LOWER)			
3	2	BUSHING			
4	1	SPACER			
5	1	O-RING			
6	2	GREASE FITTING	75		8.5
7	2	BUSHING			
8	1	THRUST WASHER			
9	2	SCREW (7/16-20 x 7-1/2 IN.)			
10	2	MOUNT			
11	2	WASHER			
12	2	WASHER			
13	2	NUT		50	68
14	1	STEERING LINK ASSEMBLY			
15	1	SCREW (3/8-24 x 1-1/4 IN.)		20	27
16	2	NUT		See Note	
17	2	WASHER			
18	1	SWIVEL PIN AND STEERING ARM (BLACK)			
19	1	BOTTOM YOKE (BLACK)			
20	1	RETAINING RING			
21	1	BUMPER			
22	2	SCREW (1/4-28 x 1/2 IN.)	100		11.5
23	1	TRIM SENDER ASSEMBLY			
24	2	SCREW	15		1.7
25	2	LOCKWASHER			
26	2	WASHER			
27	2	STRIKER PLATE			
28	2	LOCKWASHER			
29	2	NUT		23	31
30	1	DECAL-Serial Number Overlamine			

NOTE: A – Torque nut to 120 lb. in. (13.5 Nm) and then back off 1/4 turn.

NOTE: B – Torque nut to 20 lb. ft. (27 Nm)



Transom Brackets



 95 2-4-C w/Teflon (92-825407A12)

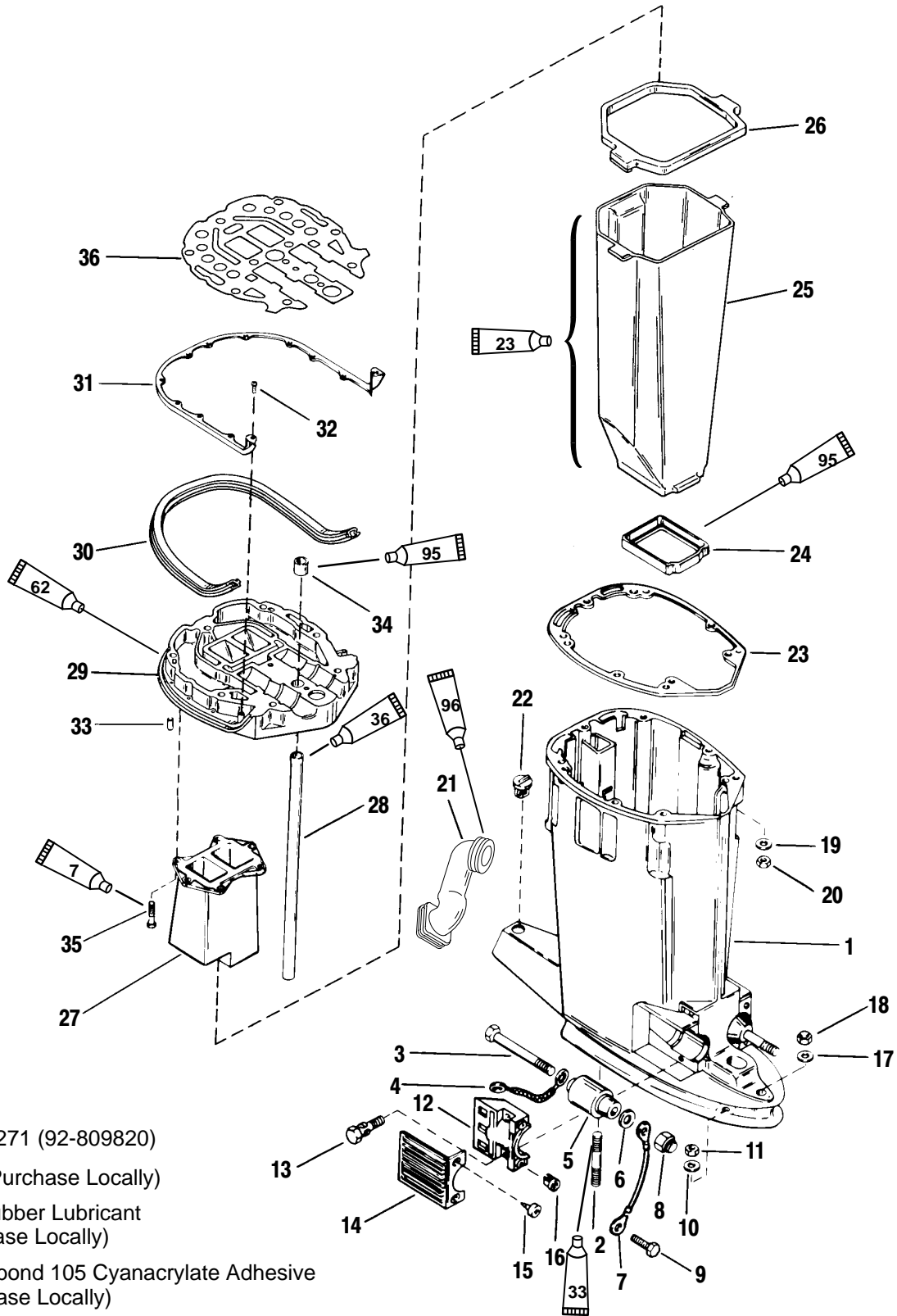


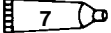
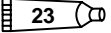
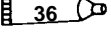
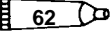
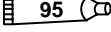
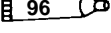
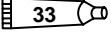
Transom Brackets

REF. NO.	QTY.	DESCRIPTION	TORQUE		
			lb-in	lb-ft	Nm.
1	1	TRANSOM BRACKET (STARBOARD)(BLACK)			
2	1	TRANSOM BRACKET (PORT) (BLACK)			
3	1	GREASE FITTING (PORT)	80		9
4	1	TILT TUBE			
5	1	NUT (1 IN.-14)		45	61
6	1	O-RING			
7	2	WAVE WASHER			
8	1	NUT (7/8-14)		45	61
9	4	BOLT			
10	4	WASHER			
11	4	NUT			
12	1	TILT LOCK LEVER ASSEMBLY			
13	1	SPRING			
14	2	BUSHING			
15	1	SPRING			
16	1	KNOB			
17	1	GROOVE PIN			
18	1	PIN			



rive Shaft Housing and Exhaust Tube



-  Loctite 271 (92-809820)
-  Soap (Purchase Locally)
-  P80 Rubber Lubricant (Purchase Locally)
-  Permabond 105 Cyanacrylate Adhesive (Purchase Locally)
-  2-4-C w/Teflon (92-825407A12)
-  Loctite Superbonder 454 Gel (Purchase Locally)
-  Loctite "RCA/680" Retaining Compound (92-809833)



Drive Shaft Housing and Exhaust Tube

REF. NO.	QTY.	DESCRIPTION	TORQUE		
			lb-in	lb-ft	Nm
1	1	DRIVE SHAFT HOUSING (LONG)			
	1	DRIVE SHAFT HOUSING (X-LONG)			
2	2	STUD			
3	2	SCREW (1/2-20 x 6 IN.)			
4	1	GROUND WIRE			
5	2	LOWER MOUNT			
6	2	WASHER			
7	1	GROUND WIRE			
8	2	NUT		50	68
9	1	SCREW (1/4-20 x 3/8 IN.)			
10	2	WASHER			
11	2	NUT		50	68
12	2	CLAMP			
13	4	SCREW (5/16-18 x 1-1/4 IN.)		22	30
14	2	COVER			
15	4	SCREW (12-24 x 5/8 IN.)	17		2
16	4	NUT		25	34
17	1	WASHER			
18	1	NUT		57	77
19	4	WASHER			
20	4	NUT		23	31
21	1	IDLE EXHAUST BOOT			
22	1	PLUG			
23	1	GASKET			
24	1	SEAL (LOWER)			
25	1	EXHAUST TUBE			
26	1	SEAL (UPPER)			
27	1	EXHAUST EXTENSION (150)			
	1	EXHAUST EXTENSION (115, 135)			
28	1	WATER TUBE (LONG)			
	1	WATER TUBE (X-LONG)			
29	1	PLATE ASSEMBLY			
30	1	SEAL			
31	1	BRACKET			
32	12	SCREW (10-16 x 1/2 IN.)	80		9
33	2	DOWEL PIN			
34	1	SEAL			
35	6	SCREW (1/4-20 x 3/4 IN.)	60		7
36	1	GASKET			

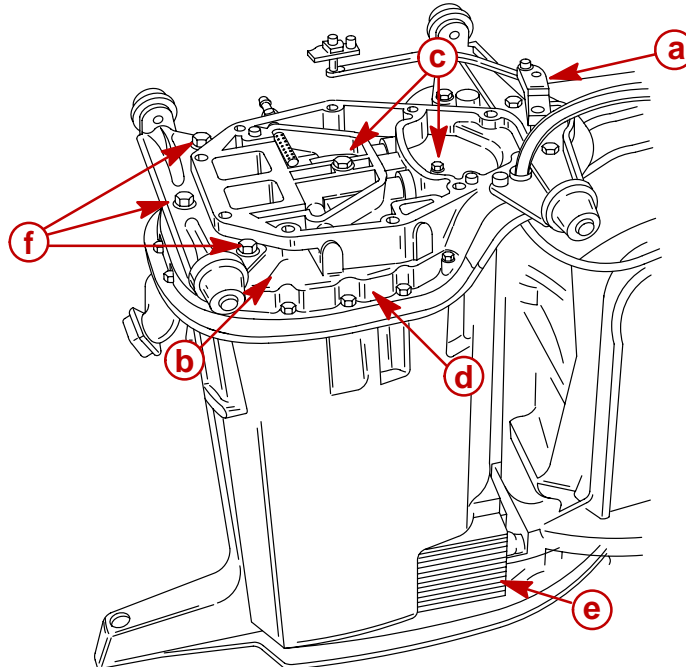


Drive Shaft Housing and Dyna-Float Suspension

Refer to “Powerhead Removal” section to remove powerhead. Refer to “Lower Unit Removal” in this section to remove lower unit.

Removal and Disassembly

1. Remove shift shaft from driveshaft housing by pulling straight up on shaft.
2. Remove 5 bolts which secure exhaust extension plate to drive shaft housing. After bolts are removed, lift exhaust extension plate off drive shaft housing.
3. Remove screws, which secure lower mount covers to drive shaft housing, then remove covers.

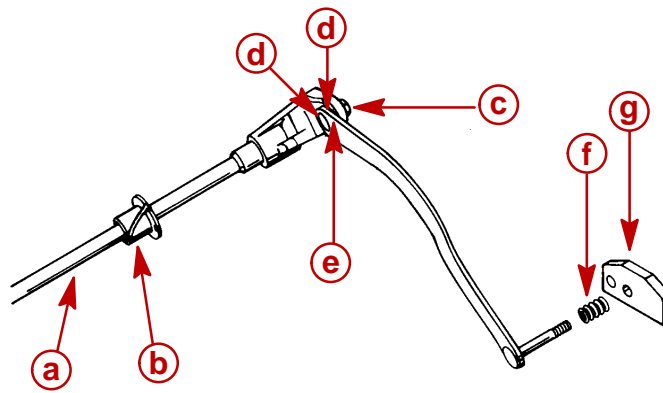


57729

- a** - Shift Shaft Linkage
- b** - Exhaust Extension Plate
- c** - Exhaust Plate to Drive Shaft Housing Bolts
- d** - Driveshaft Housing Plate
- e** - Lower Mount Cover (One Each Side)
- f** - Mounting Bracket Bolts (3)

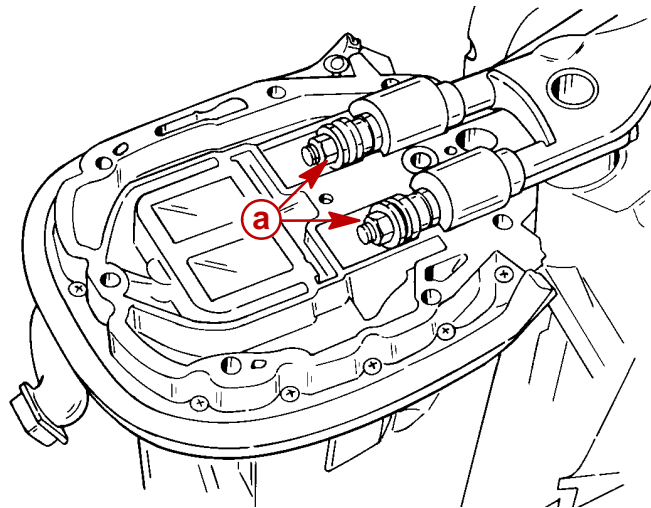


SHIFT LINKAGE ASSEMBLY



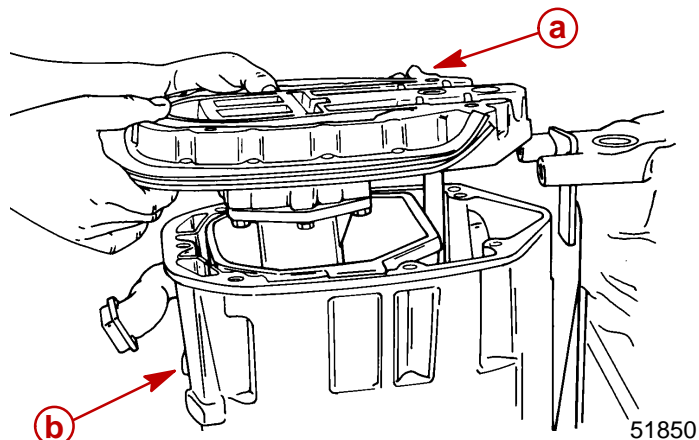
- a** - Shift Shaft Assembly
- b** - Bushing
- c** - Lock Nut
- d** - Washer (2)
- e** - Bushing (Hidden)
- f** - Spring
- g** - Guide Block

1. Remove upper mount nuts and flat washers.



- a** - Upper Mount Nuts

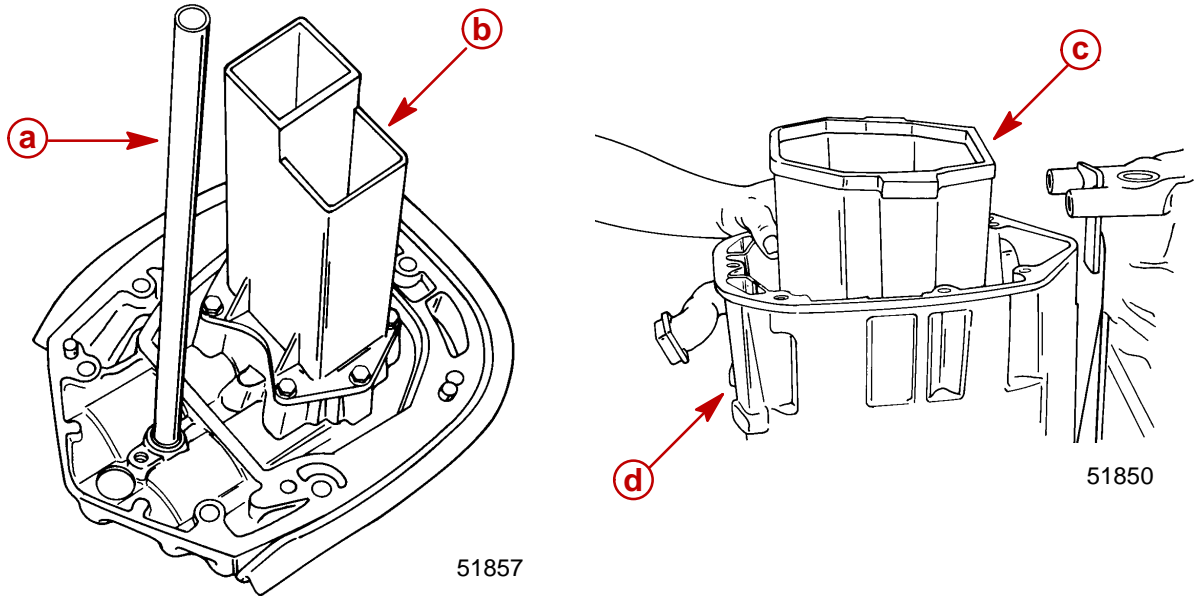
2. Lift driveshaft housing plate off housing.



- a** - Drive Shaft Housing Plate
- b** - Drive Shaft Housing

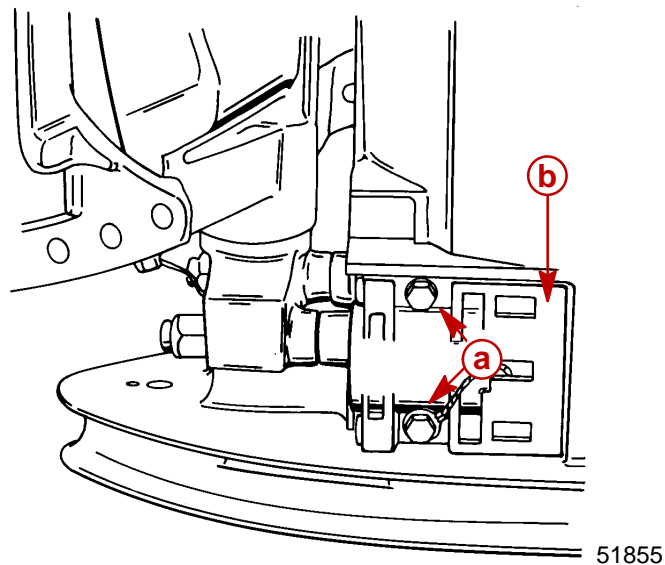


3. Remove water tube from driveshaft housing plate.
4. Exhaust diffuser is secured to housing plate with 6 bolts. Remove bolts, then remove diffuser.
5. Pull exhaust tube out of drive shaft housing.



- a** - Water Tube
- b** - Exhaust Diffuser
- c** - Exhaust Tube
- d** - Drive Shaft Housing

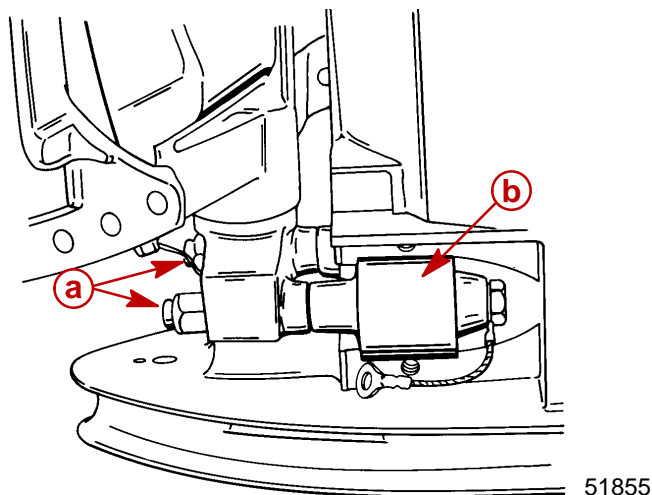
6. Remove all gasket material from driveshaft housing and related components.
7. Remove bolts, which secure lower mount retainers to drive shaft housing, and remove retainers.
8. Remove rubber caps from lower mount bolts.



- a** - Bolts
- b** - Lower Mount Retainer (One Each Side)



9. Remove lower mount nuts.

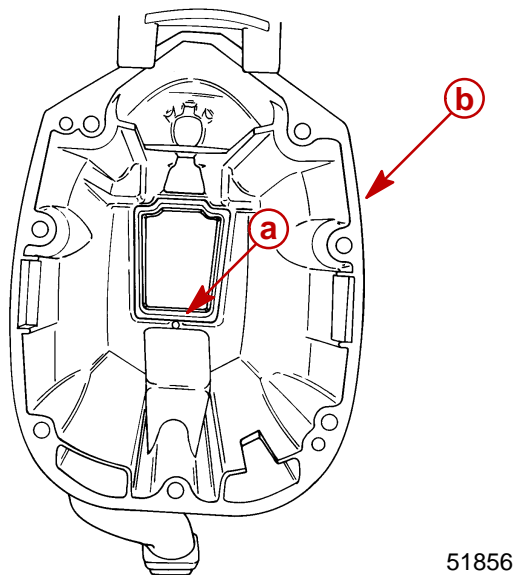


- a** - Lower Mount Nuts
- b** - Lower Mount (1 each side)

10. Remove driveshaft housing from swivel bracket by pulling alternately from top to bottom on housing.
11. Remove upper and lower mounts by lifting them out of driveshaft housing.

Reassembly and Installation

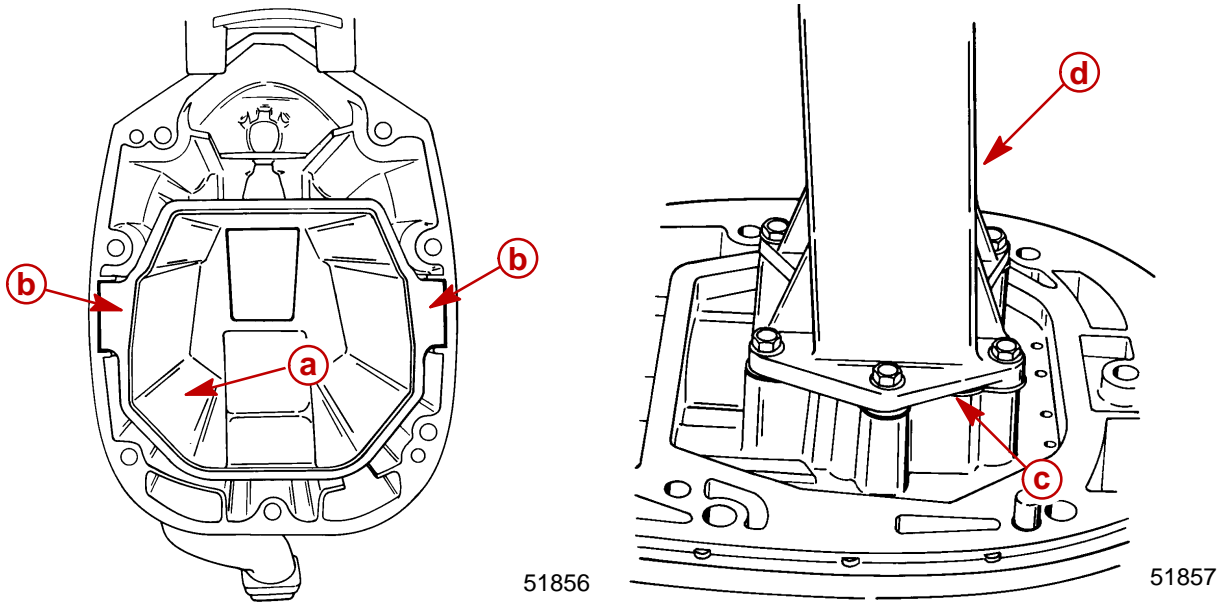
1. Apply a thin coat of 2-4-C w/Teflon Marine Lubricant onto inside portion of exhaust tube seal.
2. Install exhaust tube seal into driveshaft housing with tapered side of seal facing up.



- a** - Exhaust Tube Seal
- b** - Driveshaft Housing

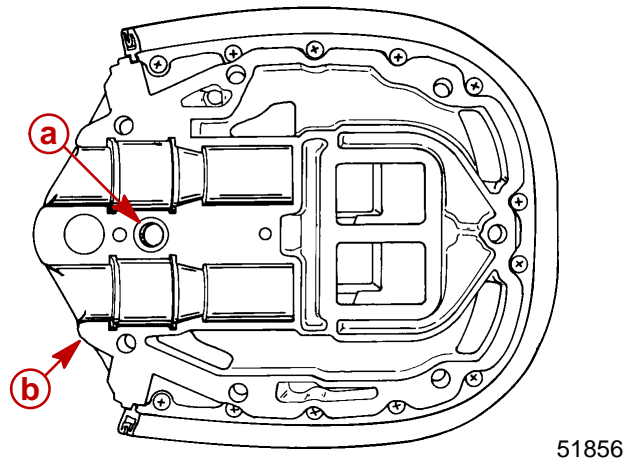


3. Push exhaust tube boots onto tabs on each side of exhaust tube.
4. Position exhaust tube in drive shaft housing and push down on tube until boots rest in grooves on inside of housing.
5. Position driveshaft housing to plate gasket on top of housing.
6. Install an exhaust diffuser gasket and exhaust diffuser onto plate, then secure both to plate with 6 bolts. Clean bolts with Loctite 7649 Primer and then apply Loctite 271 to bolt threads. Torque bolts to 60 lb. in. (7.0 Nm).



- a** - Exhaust Tube
- b** - Exhaust Tube Boots
- c** - Exhaust Diffuser Gasket
- d** - Exhaust Diffuser

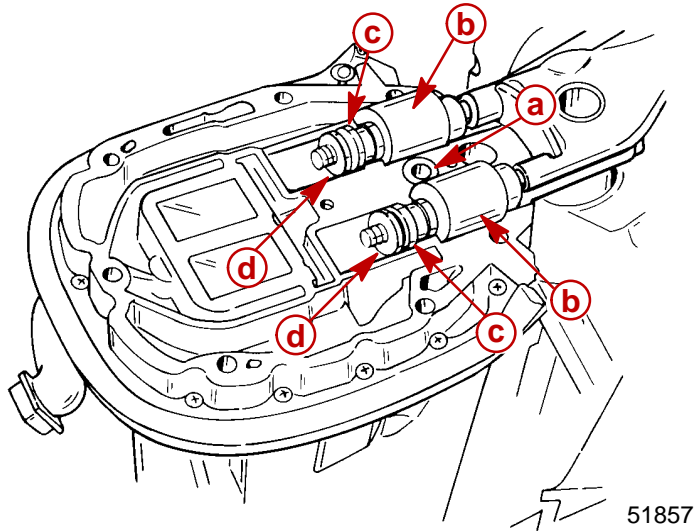
7. Apply a small amount of 2-4-C w/Teflon Marine Lubricant onto water tube seal.
8. Install water tube seal into driveshaft housing plate with plastic end of seal facing up and install water tube.



- a** - Water Tube Seal
- b** - Driveshaft Housing Plate



9. Position drive shaft housing plate on top of housing.
10. Apply a thin coat of Perfect Seal onto metal portion of upper dyna-float mounts.
11. Position mounts on drive shaft housing plate.
12. Install a rubber washer onto each upper mount, followed by a metal washer.

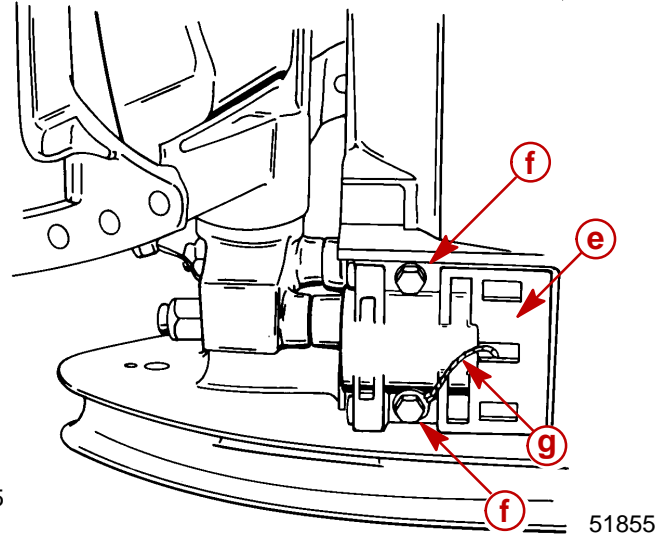
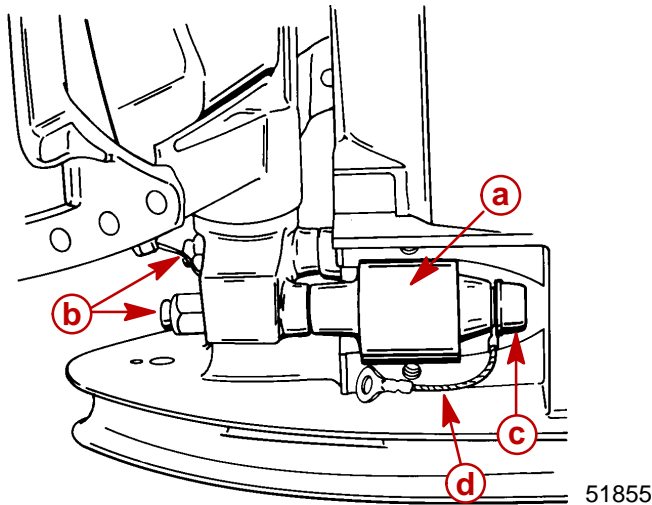


- a** - Water Tube Seal (Plastic End)
- b** - Dyna-Float Mounts
- c** - Rubber Washers
- d** - Metal Washer

13. Install a ground strap onto one of the lower mount mounting bolts.
- NOTE:** Apply Perfect Seal along length of lower mount bolts.
14. Insert a mounting bolt thru the short end of each lower mount.
 15. Position a mount on each lower side of driveshaft housing.
 16. Install a flat washer over each lower mounting bolt.
 17. Position a bumper on steering arm between mounting bolts.
 18. Start upper mounting bolts in upper mounts and align lower mounting bolts with holes in swivel pin yoke. Slide driveshaft housing up against yoke and bumper.
 19. Secure upper mounts to steering arm with flat washers and self-locking nuts. Torque nuts to 50 lb. ft. (68.0 Nm).
 20. Install ground strap (if equipped) between port lower mount bolt and swivel bracket.
 21. Secure lower mounts to swivel pin yoke with self-locking nuts. Torque nuts to 50 lb. ft. (68.0 Nm). Place a rubber cap over each lower mounting bolt head.



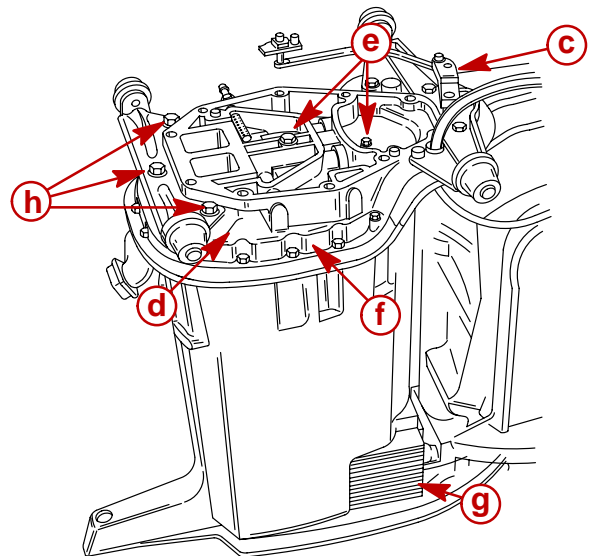
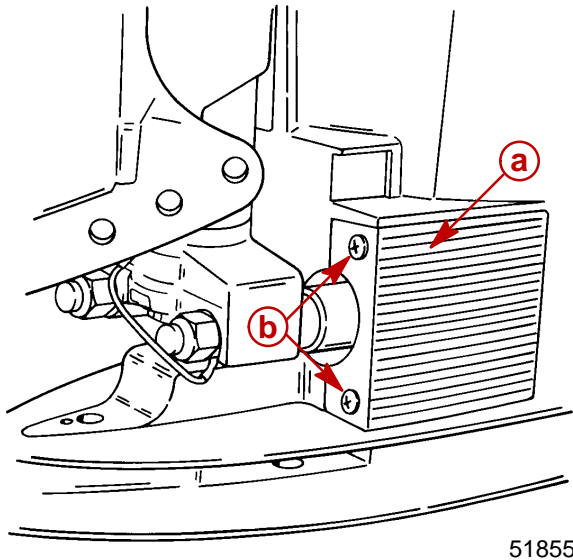
22. Install lower mount retainers and secure each retainer with 2 bolts. (Secure ground strap with the nearest retainer bolt.) Torque bolts to 160 lb. in. (18.0 Nm).



- a** - Lower Mount
- b** - Nut (2) [Torque to 50 lb. ft. (68.0 Nm)]
- c** - Rubber Cap
- d** - Ground Strap (only one side)
- e** - Lower Mount Retainer
- f** - Bolts (2) [Torque to 160 lb. in. (18.0 Nm)]
- g** - Ground Strap

23. Install lower mount covers and secure each cover with 2 screws.

24. Install exhaust extension plate on driveshaft housing with shift shaft assembly. Secure extension plate to drive shaft housing with 5 bolts.



- a** - Cover (One Each Side)
- b** - Screws (Two for Each Cover)
- c** - Shift Shaft Linkage
- d** - Exhaust Extension Plate
- e** - Exhaust Plate to Driveshaft Housing Bolts, Torque to 25 lb. ft. (34 Nm)
- f** - Drive Shaft Housing Plate
- g** - Lower Mount Cover (One Each Side)
- h** - Mounting Bracket Bolts, Torque to 40 lb. ft. (54 Nm)